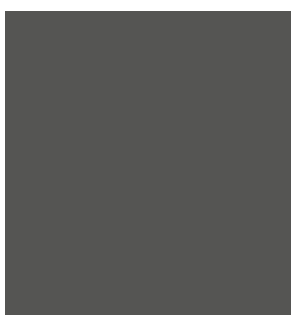


- ◆ Les boutons sont présentés en taille réelle.
I bottoni sono presentati in misura reale.
Life-size pictures.
Die Knöpfe sind in Lebensgröße präsentiert.

◆ *Inspiration / Ispirazione / Inspiration / Inspiration*



T15



501 Blanc



512 Rose layette



577 Gris



580 Noir

50231

36 pcs

T15 Ø15mm



PES



PES



PES



PES



501 Blanc



513 Rose



558 Marine

50185

24 pcs

Ø 11mm



ABS



ABS



ABS



ABS



01 Translucide



513 Rose



516 Fuchsia



519 Rouge



580 Noir

60644

24 pcs

Ø 10mm



PES



PES



PES



PES



68 Mauve



501 Translucide



512 Rose



519 Rouge



523 Orange



536 vert



833 Bleu



580 Noir

50178

24 pcs

Ø 14mm



PES + Verre



PES + Vetro



PES + Glass



PES + Glas



T32



T20

512 Rose

519 Rouge

120 Argent
-T32-

50164

T20=24 pcs - T32=12 pcs

T20 Ø20mm

T32 Ø32mm

Acrylique

Acrilico

Acrylic

Acryl



545 Bleu ciel



519 Rouge

120 Argent
-T32-

580 Noir



100 Or

536 Anis
T18 T25

523 Orange
T12 T25

568 Marron
T12



512 Rose
-T18-

559 Prune

68 Mauve
T12 T18 T25

560 Marine
T12 T18 T32

50163

T12=36 pcs - T18=24 pcs - T25=18 pcs - T32=12 pcs

T12 Ø12mm

T18 Ø18mm

T25 Ø25mm

T32 Ø32mm

Acrylique

Acrilico

Acrylic

Acryl

Bijoux



513 Rose



516 Fuchsia



519 Rouge



566 Kaki



501 Blanc



550
Bleu tropique



919
Bleu marine



578
Gris foncé

60743

24 pcs

T12 Ø 12mm

Acrylique

Acrilico

Acrylic

Acryl



513 Rose



516 Fuchsia



519 Rouge



566 Kaki



501 Blanc



550
Bleu tropique



919
Bleu marine



578
Gris foncé

60744

24 pcs

T7 Ø 7mm

55% ABS - 45% Verre

55% ABS - 45% Vetro

55% ABS - 45% Glass

55% ABS - 45% Glas



577 Gris



558 Marine



519 Rouge

50207

12 pcs

Ø 12mm

85% Acier
15% Résine

85% Acciaio
15% Resina

85% Steel
15% Resin

85% Stahl
15% Kunstharz



512 Rose



558 Marine



580 Noir

50208

12 pcs

Ø 9mm

85% Acier
12% Résine
3% Verre

85% Acciaio
12% Resina
3% Vetro

85% Steel
12% Resin
3% Glass

85% Stahl
12% Kunstharz
3% Glas

T15



841 Écru / Or



524 Framboise / Argent



68 Rose / Or



520 Bordeaux / Or

T22



T15



919 Marine / Or



501 Blanc / Argent



577 Gris / Argent



580 Noir / Or

T22



50217

18 pcs

T15 Ø 15mm

T22 Ø 22mm

Alliage

Lega

Alloy

Liegerung



501 Blanc



512 Rose layette



516 Fuchsia



519 Rouge



843 Pêche



523 Orange



525 Prune



841 Ivoire



871 Vert d'eau



536 Vert



20 Bleu pétrole



560 Marine



832 Gris argent



580 Noir

60738

36 pcs

T08 Ø 8mm



PES



PES



PES



PES

T13

T15



02 Bleu ciel



51 Ivoire
T13



74 Saumon



08 Rouge



23 Turquoise



38 Gris



14 Noir

60206

24 pcs

T13 Ø 13mm

T15 Ø 15mm



PES



PES



PES



PES

T1

T2

T1

T2



01 Argent



100 Or



50132

12 pcs

T1 Ø 15mm

T2 Ø 21mm



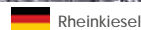
Strass



Strass



Rhinestone



Rheinkiesel



01 Argent

50130

12 pcs

T2 Ø 33mm



Strass



Strass



Rhinestone



Rheinkiesel



08 Or rose



100 Or



110 Argent

50245

10 pcs T12 Ø 12 mm

- 50% Alliage Zinc - 50% Verre
- 50% Lega di Zinco - 50% Vetro
- 50% Zinc Alloy - 50% Glass
- 50% Zinkliegerung - 50% Glas



08 Or rose



100 Or



110 Argent

50244

10 pcs T17 Ø 17 mm

- 50% Alliage Zinc - 50% Verre
- 50% Lega di Zinco - 50% Vetro
- 50% Zinc Alloy - 50% Glass
- 50% Zinkliegerung - 50% Glas



501 Crystal

50190

6 pcs Ø 21 mm

- 65% Alliage Zinc - 35% Verre
- 65% Lega di Zinco - 35% Vetro
- 65% Zinc Alloy - 35% Glass
- 65% Zinkliegerung - 35% Glas



580 Noir

50159

6 pcs Ø 21 mm

- 50% Alliage Zinc - 30% ABS - 20% Verre
- 50% Lega di Zinco - 30% ABS - 20% Vetro
- 50% Zinc Alloy - 30% ABS - 20% Glass
- 50% Zinkliegerung - 30% ABS - 20% Glas



580 Noir

50158

6 pcs Ø 28 mm

- 70% Alliage Zinc - 30% Verre
- 70% Lega di Zinco - 30% Vetro
- 70% Zinc Alloy - 30% Glass
- 70% Zinkliegerung - 30% Glas



501 Crystal

50193

6 pcs Ø 17 mm

- 70% Alliage Zinc - 30% Verre
- 70% Lega di Zinco - 30% Vetro
- 70% Zinc Alloy - 30% Glass
- 70% Zinkliegerung - 30% Glas



501 Crystal

50194

6 pcs T18 Ø 18 mm

- 70% Alliage Zinc - 30% Verre
- 70% Lega di Zinco - 30% Vetro



501 Crystal

T22 Ø 22 mm

- 70% Zinc Alloy - 30% Glass
- 70% Zinkliegerung - 30% Glas



580 Noir

50156

6 pcs Ø 20 mm

- 65% Alliage Zinc - 35% Verre
- 65% Lega di Zinco - 35% Vetro
- 65% Zinc Alloy - 35% Glass
- 65% Zinkliegerung - 35% Glas



980 Crystal / Noir

50196

6 pcs Ø 23 mm

- 85% Alliage Zinc - 15% Verre
- 85% Lega di Zinco - 15% Vetro
- 85% Zinc Alloy - 15% Glass
- 85% Zinkliegerung - 15% Glas



980 Crystal / Noir

50197

6 pcs Ø 22 mm

- 65% Alliage Zinc - 35% Verre
- 65% Lega di Zinco - 35% Vetro
- 65% Zinc Alloy - 35% Glass
- 65% Zinkliegerung - 35% Glas

50052



01 Argent

12 pcs Ø 11mm

Strass Strass
 Rhinestone Rheinkiesel

50053



01 Argent

12 pcs Ø 15mm

Strass Strass
 Rhinestone Rheinkiesel

50050



01 Argent

12 pcs Ø 25mm

Strass Strass
 Rhinestone Rheinkiesel

50049



01 Argent

12 pcs Ø 15mm

Strass Strass Rhinestone Rheinkiesel

50048



01 Argent

12 pcs Ø 17mm

Strass Strass Rhinestone Rheinkiesel

50155



501 Argent



513 Rose



29 Violet



525 Rouge



558 Bleu



580 Noir

6 pcs Ø 15mm

Strass Strass Rhinestone Rheinkiesel

50225



T19

100 Or



110 Argent



512 Rose



580 Noir



919 Marine

12 pcs T19 Ø 19mm

60% Acier - 40% Verre 60% Acciaio - 40% Vetro 60% Alloy - 40% Glass 60% Liegerung - 40% Glas



501 Blanc



580 Noir

50253

24 pcs

T11 Ø11 mm

90% PA 10% Verre
 90% PA 10% Vetro
 90% PA 10% Glass
 90% PA 10% Glas



501 Blanc



580 Noir

50252

24 pcs

T12 Ø12 mm

90% PA 10% Verre
 90% PA 10% Vetro
 90% PA 10% Glass
 90% PA 10% Glas



501 Blanc



580 Noir

50254

24 pcs

T11 Ø11 mm

90% PC 10% Verre
 90% PC 10% Vetro
 90% PC 10% Glass
 90% PC 10% Glas

T12



501 Blanc



504 Jaune



512 Rose layette



833 Turquoise



542 Bleu



919 Marine



580 Noir

50216

18 pcs

T12 Ø12mm

50% Nylon - 50% Verre
 50% Nilone - 50% Vetro
 50% Nylon - 50% Glass
 50% Nylon - 50% Glas

T11



501 Blanc



504 Jaune



523 Orange



519 Rouge



512 Rose layette



516 Fuchsia



577 Gris



580 Noir

50215

12 pcs

T11 Ø11mm

50% Nylon - 50% Verre
 50% Nilone - 50% Vetro
 50% Nylon - 50% Glass
 50% Nylon - 50% Glas

T11



110 Argent

T18



100 Or

T23



506 Jaune



512 Rose



519 Rouge

60714

T11=36 pcs - T18=24 pcs - T23=12 pcs

T11 Ø11mm

T18 Ø18mm

T23 Ø23mm

PES
 PES
 PES
 PES



501 Blanc



512 Rose



573 Beige



577 Gris



580 Noir



919 Marine

50223

6 pcs

T25 Ø 25mm

 Alliage - Verre
  Lega - Vetro
  Alloy - Glass
  Liegerung - Glas



501 Blanc / Or



519 Rouge / Argent



536 Vert / Or



572 Pêche / Or



580 Noir / Or

50224

12 pcs

Ø 20mm

 80% Acier - 10% Peinture
5% Acrylique - 5% Verre
  80% Acciaio - 10% Vernice
5% Acrilico - 5% Vetro
  80% Alloy - 10% Paint
5% Acrylic - 5% Glass
  80% Liegerung - 10% Paint
5% Acrylic - 5% Glass



181 Gris clair



501 Blanc



512 Rose layette



523 Orange



540 Vert



573 Abricot



580 Noir



833 Turquoise

50218

8 pcs

T20 Ø 20mm

 Alliage - Verre
  Lega - Vetro
  Alloy - Glass
  Liegerung - Glas



50222

100 Or

12 pcs

T 10 Ø 17 mm



60% Verre
40% Alliage



60% Vetro
40% Lega



60% Glass
40% Alloy



60% Glas
40% Liegerung



100 Or



120 Argent

50221

12 pcs

T19 Ø19 mm



50% Alliage
50% Verre



50% Lega
50% Vetro



50% Alloy
50% Glass



50% Liegerung
50% Glas



100 Or



120 Argent

50220

12 pcs

T17 Ø 17 mm



50% Alliage
50% Verre



50% Lega
50% Vetro



50% Alloy
50% Glass



50% Liegerung
50% Glas

17 mm



21 mm



120 Argent

578 Canon de fusil

580 Noir

100 Or

50219

12 pcs

Ø 17mm

Ø 21mm



50% Alliage - 50% Verre



50% Lega - 50% Vetro



50% Alloy - 50% Glass



50% Liegerung - 50% Glas



580 Noir

50238

8 pcs T17 Ø17 mm T21 Ø21 mm

60% Alliage Zinc
 60% Lega di Zinco
 60% Alloy Zinc
 60% Zinkliagerung
 40% Verre
 40% Vetro
 40% Glass
 40% Glas



501 Argent

50236

8 pcs T25 Ø19 mm

50% Alliage Zinc
 50% Lega di Zinco
 50% Alloy Zinc
 50% Zinkliagerung
 30% ABS
 30% ABS
 20% Verre
 20% Vetro
 30% ABS
 20% Glass
 30% ABS
 20% Glas



501 Or

50237

18 pcs T12 Ø12 mm

50% Alliage Zinc
 50% Lega di Zinco
 50% Alloy Zinc
 50% Zinkliagerung
 40% ABS
 40% ABS
 10% Verre
 10% Vetro
 40% ABS
 10% Glass
 40% ABS
 10% Glas



120 Argent strass

50235

8 pcs T19 Ø19 mm

50% Alliage Zinc
 50% Lega di Zinco
 50% Alloy Zinc
 50% Zinkliagerung
 50% Verre
 50% Vetro
 50% Glass
 50% Glas



181 Gris clair



577 Gris foncé



580 Noir



919 Navy



519 Rouge



573 Beige



512 Rose clair



501 Blanc

50234

36 pcs T15 Ø15 mm

ABS
 ABS
 ABS
 ABS



181 Gris clair



577 Gris foncé



580 Noir



919 Navy



519 Rouge



573 Beige



512 Rose clair



501 Blanc

50233

36 pcs T10 Ø10 mm

ABS
 ABS
 ABS
 ABS



181 Gris clair



577 Gris foncé



580 Noir



919 Navy



519 Rouge



573 Beige



512 Rose clair



501 Blanc

50232

36 pcs T12 Ø12 mm

ABS
 ABS
 ABS
 ABS



099 Combo violet vert/Argent



833 Combo turquoise/Argent



573 Combo or/Argent



536 Combo vert/Argent



864 Combo violet/Argent



514 Combo pink/Argent



516 Combo fuchsia/Argent



525 Combo rose/Argent

50262

6 pcs

T28 Ø 28mm

 60% Alliage Zinc - 40% Verre
  60% Lega di Zinco - 40% Vetro
  60% Zinc Alloy - 40% Glass
  60% Zinkliegerung - 40% Glas



573 Marron/Argent



558 Bleu/Argent



501 Crystal/Argent



514 Rose/Argent



519 Rouge/Argent



536 Vert clair/Argent



530 Émeraude/Argent



580 Noir/Argent

50260

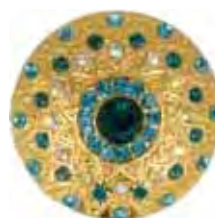
6 pcs

T19 Ø 19mm

 60% Alliage Zinc - 40% Verre
  60% Lega di Zinco - 40% Vetro
  60% Zinc Alloy - 40% Glass
  60% Zinkliegerung - 40% Glas



099 Combo violet vert/Or



833 Combo turquoise/Or



573 Combo or/Or



536 Combo vert/Or



864 Combo violet/Or



514 Combo pink/Or



516 Combo fuchsia/Or



525 Combo rose/Or

50261

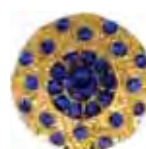
6 pcs

T28 Ø 28mm

 60% Alliage Zinc - 40% Verre
  60% Lega di Zinco - 40% Vetro
  60% Zinc Alloy - 40% Glass
  60% Zinkliegerung - 40% Glas



573 Marron/Or



558 Bleu/Or



501 Crystal/Or



514 Rose/Or



519 Rouge/Or



536 Vert clair/Or



530 Émeraude/Or



580 Noir/Or

50259

6 pcs

T19 Ø 19mm

 60% Alliage Zinc - 40% Verre
  60% Lega di Zinco - 40% Vetro
  60% Zinc Alloy - 40% Glass
  60% Zinkliegerung - 40% Glas