

- ◆ Les boutons sont présentés en taille réelle.
I bottoni sono presentati in misura reale.
Life-size pictures.
Die Knöpfe sind in Lebensgröße präsentiert.

◆ *Inspiration / Ispirazione / Inspiration / Inspiration*



T15



501 Blanc



512 Rose layette



577 Gris



580 Noir

50231

36 pcs

T15 Ø15mm



PES



PES



PES



PES



501 Blanc



513 Rose



558 Marine

50185

24 pcs

Ø 11mm



ABS



ABS



ABS



ABS



01 Translucide



513 Rose



516 Fuchsia



519 Rouge



580 Noir

60644

24 pcs

Ø 10mm



PES



PES



PES



PES



68 Mauve



501 Translucide



512 Rose



519 Rouge



523 Orange



536 vert



833 Bleu



580 Noir

50178

24 pcs

Ø 14mm



PES + Verre



PES + Vetro



PES + Glass



PES + Glas



T32



T20

512 Rose

519 Rouge

120 Argent

~~T32~~

50164

T20=24 pcs - T32=12 pcs

T20 Ø20mm

T32 Ø32mm

Acrylique

Acrilico

Acrylic

Acryl



545 Bleu ciel



519 Rouge

120 Argent

580 Noir

~~T32~~



100 Or

536 Anis

523 Orange

568 Marron

T18 T25

T12 T25

T12



512 Rose

559 Prune

68 Mauve

560 Marine

~~T18~~

T12 T18 T25

T12 T18 T32

50163

T12=36 pcs - T18=24 pcs - T25=18 pcs - T32=12 pcs T12 Ø12mm T18 Ø18mm T25 Ø25mm T32 Ø32mm

Acrylique

Acrilico

Acrylic

Acryl

Bijoux



513 Rose 516 Fuchsia 519 Rouge 566 Kaki 501 Blanc 550 Bleu tropique 919 Bleu marine 578 Gris foncé

60743

24 pcs T12 Ø 12mm

Acrylique
 Acrilico
 Acrylic
 Acryl



513 Rose 516 Fuchsia 519 Rouge 566 Kaki 501 Blanc 550 Bleu tropique 919 Bleu marine 578 Gris foncé

60744

24 pcs T7 Ø 7mm

55% ABS - 45% Verre
 55% ABS - 45% Vetro
 55% ABS - 45% Glass
 55% ABS - 45% Glas



577 Gris 558 Marine 519 Rouge

50207

12 pcs Ø 12mm

85% Acier 15% Résine
 85% Acciaio 15% Resina
 85% Steel 15% Resin
 85% Stahl 15% Kunstharz



512 Rose 558 Marine 580 Noir

50208

12 pcs Ø 9mm

85% Acier 12% Résine 3% Verre
 85% Acciaio 12% Resina 3% Vetro
 85% Steel 12% Resin 3% Glass
 85% Stahl 12% Kunstharz 3% Glas



T15

T22

841 Écru / Or 524 Framboise / Argent 68 Rose / Or 520 Bordeaux / Or

T15

T22

919 Marine / Or 501 Blanc / Argent 577 Gris / Argent 580 Noir / Or

50217

18 pcs T15 Ø 15mm T22 Ø 22mm

Alliage
 Lega
 Alloy
 Liegerung



501 Blanc



512 Rose layette



516 Fuchsia



519 Rouge



843 Pêche



523 Orange



525 Prune



841 Ivoire



871 Vert d'eau



536 Vert



20 Bleu pétrole



560 Marine



832 Gris argent



580 Noir

60738

36 pcs

T08 Ø 8mm



PES



PES



PES



PES

T13



T15



02 Bleu ciel



51 Ivoire
T13



74 Saumon



08 Rouge



23 Turquoise



38 Gris



14 Noir

60206

24 pcs

T13 Ø 13mm

T15 Ø 15mm



PES



PES



PES



PES

T1



01 Argent

T2



T1



100 Or

T2



50132

12 pcs

T1 Ø 15mm

T2 Ø 21mm



Stress



Stress



Rhinestone



Rheinkiesel



01 Argent

50130

12 pcs

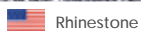
T2 Ø 33mm



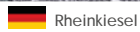
Stress



Stress



Rhinestone



Rheinkiesel



08 Or rose 100 Or 110 Argent

50245

10 pcs T12 Ø 12 mm

- 50% Alliage Zinc - 50% Verre 50% Lega di Zinco - 50% Vetro
- 50% Zinc Alloy - 50% Glass 50% Zinkliegerung - 50% Glas



08 Or rose 100 Or 110 Argent

50244

10 pcs T17 Ø 17 mm

- 50% Alliage Zinc - 50% Verre 50% Lega di Zinco - 50% Vetro
- 50% Zinc Alloy - 50% Glass 50% Zinkliegerung - 50% Glas



501 Crystal

50190

6 pcs Ø 21 mm

- 65% Alliage Zinc 65% Lega di Zinco
- 35% Verre 35% Vetro
- 65% Zinc Alloy 65% Zinkliegerung
- 35% Glass 35% Glas



580 Noir

50159

6 pcs Ø 21 mm

- 50% Alliage Zinc 50% Lega di Zinco
- 30% ABS 30% ABS
- 20% Verre 20% Vetro
- 50% Zinc Alloy 50% Zinkliegerung
- 30% ABS 30% ABS
- 20% Glass 20% Glas



580 Noir

50158

6 pcs Ø 28 mm

- 70% Alliage Zinc 70% Lega di Zinco
- 30% Verre 30% Vetro
- 70% Zinc Alloy 70% Zinkliegerung
- 30% Glass 30% Glas



501 Crystal

50193

6 pcs Ø 17 mm

- 70% Alliage Zinc 70% Lega di Zinco
- 30% Verre 30% Vetro
- 70% Zinc Alloy 70% Zinkliegerung
- 30% Glass 30% Glas



501 Crystal

50194

6 pcs T18 Ø 18 mm

- 70% Alliage Zinc 70% Lega di Zinco
- 30% Verre 30% Vetro



501 Crystal

- 70% Zinc Alloy 70% Zinkliegerung
- 30% Glass 30% Glas



580 Noir

50156

6 pcs Ø 20 mm

- 65% Alliage Zinc 65% Lega di Zinco
- 35% Verre 35% Vetro
- 65% Zinc Alloy 65% Zinkliegerung
- 35% Glass 35% Glas



980 Crystal / Noir

50196

6 pcs Ø 23 mm

- 85% Alliage Zinc 85% Lega di Zinco
- 15% Verre 15% Vetro
- 85% Zinc Alloy 85% Zinkliegerung
- 15% Glass 15% Glas



980 Crystal / Noir

50197

6 pcs Ø 22 mm

- 65% Alliage Zinc 65% Lega di Zinco
- 35% Verre 35% Vetro
- 65% Zinc Alloy 65% Zinkliegerung
- 35% Glass 35% Glas

50052



01 Argent

12 pcs Ø 11mm

Strass Strass
 Rhinestone Rheinkiesel

50053



01 Argent

12 pcs Ø 15mm

Strass Strass
 Rhinestone Rheinkiesel

50050



01 Argent

12 pcs Ø 25mm

Strass Strass
 Rhinestone Rheinkiesel

50049



01 Argent

12 pcs Ø 15mm

Strass Strass Rhinestone Rheinkiesel

50048



01 Argent

12 pcs Ø 17mm

Strass Strass Rhinestone Rheinkiesel

50155



501 Argent



513 Rose



29 Violet



525 Rouge



558 Bleu



580 Noir

6 pcs Ø 15mm

Strass Strass Rhinestone Rheinkiesel

50225



100 Or



110 Argent



512 Rose



580 Noir



919 Marine

12 pcs T19 Ø 19mm

60% Acier - 40% Verre 60% Acciaio - 40% Vetro 60% Alloy - 40% Glass 60% Liegerung - 40% Glas



501 Blanc



580 Noir

50253

24 pcs

T11 Ø11 mm

90% PA 10% Verre
 90% PA 10% Vetro
 90% PA 10% Glass
 90% PA 10% Glas



501 Blanc



580 Noir

50252

24 pcs

T12 Ø12 mm

90% PA 10% Verre
 90% PA 10% Vetro
 90% PA 10% Glass
 90% PA 10% Glas



501 Blanc



580 Noir

50254

24 pcs

T11 Ø11 mm

90% PC 10% Verre
 90% PC 10% Vetro
 90% PC 10% Glass
 90% PC 10% Glas

T12



501 Blanc



504 Jaune



512 Rose layette



833 Turquoise



542 Bleu



919 Marine



580 Noir

50216

18 pcs

T12 Ø12mm

50% Nylon - 50% Verre
 50% Nilone - 50% Vetro
 50% Nylon - 50% Glass
 50% Nylon - 50% Glas

T11



501 Blanc



504 Jaune



523 Orange



519 Rouge



512 Rose layette



516 Fuchsia



577 Gris



580 Noir

50215

12 pcs

T11 Ø11mm

50% Nylon - 50% Verre
 50% Nilone - 50% Vetro
 50% Nylon - 50% Glass
 50% Nylon - 50% Glas

T11



110 Argent

T18



100 Or

T23



506 Jaune



512 Rose



519 Rouge

60714

T11=36 pcs - T18=24 pcs - T23=12 pcs

T11 Ø11mm

T18 Ø18mm

T23 Ø23mm

PES
 PES
 PES
 PES



501 Blanc



512 Rose



573 Beige



577 Gris



580 Noir



919 Marine

50223

6 pcs

T25 Ø 25mm

 Alliage - Verre
  Lega - Vetro
  Alloy - Glass
  Liegerung - Glas



501 Blanc / Or



519 Rouge / Argent



536 Vert / Or



572 Pêche / Or



580 Noir / Or

50224

12 pcs

Ø 20mm

 80% Acier - 10% Peinture
5% Acrylique - 5% Verre
  80% Acciaio - 10% Vernice
5% Acrilico - 5% Vetro
  80% Alloy - 10% Paint
5% Acrylic - 5% Glass
  80% Liegerung - 10% Paint
5% Acrylic - 5% Glass



181 Gris clair



501 Blanc



512 Rose layette



523 Orange



540 Vert



573 Abricot



580 Noir



833 Turquoise

50218

8 pcs

T20 Ø 20mm

 Alliage - Verre
  Lega - Vetro
  Alloy - Glass
  Liegerung - Glas



50222

100 Or

12 pcs

T 10 Ø 17 mm



60% Verre
40% Alliage



60% Vetro
40% Lega



60% Glass
40% Alloy



60% Glas
40% Liegerung



100 Or



120 Argent

50221

12 pcs

T 19 Ø 19 mm



50% Alliage
50% Verre



50% Lega
50% Vetro



50% Alloy
50% Glass



50% Liegerung
50% Glas



100 Or



120 Argent

50220

12 pcs

T 17 Ø 17 mm



50% Alliage
50% Verre



50% Lega
50% Vetro



50% Alloy
50% Glass



50% Liegerung
50% Glas

17 mm



21 mm



120 Argent

578 Canon de fusil

580 Noir

100 Or

50219

12 pcs

Ø 17mm

Ø 21mm



50% Alliage - 50% Verre



50% Lega - 50% Vetro



50% Alloy - 50% Glass



50% Liegerung - 50% Glas



580 Noir

50238

8 pcs T17 Ø17 mm T21 Ø21 mm

🇫🇷 60% Alliage Zinc 🇮🇹 60% Lega di Zinco 🇺🇸 60% Alloy Zinc 🇩🇪 60% Zinkliegerung
 40% Verre 40% Vetro 40% Glass 40% Glas



501 Argent

50236

8 pcs T25 Ø19 mm

🇫🇷 50% Alliage Zinc 🇮🇹 50% Lega di Zinco
 30% ABS 30% ABS
 20% Verre 20% Vetro
🇺🇸 50% Alloy Zinc 🇩🇪 50% Zinkliegerung
 30% ABS 30% ABS
 20% Glass 20% Glas



501 Or

50237

18 pcs T12 Ø12 mm

🇫🇷 50% Alliage Zinc 🇮🇹 50% Lega di Zinco
 40% ABS 40% ABS
 10% Verre 10% Vetro
🇺🇸 50% Alloy Zinc 🇩🇪 50% Zinkliegerung
 40% ABS 40% ABS
 10% Glass 10% Glas



120 Argent strass

50235

8 pcs T19 Ø19 mm

🇫🇷 50% Alliage Zinc 🇮🇹 50% Lega di Zinco
 50% Verre 50% Vetro
🇺🇸 50% Alloy Zinc 🇩🇪 50% Zinkliegerung
 50% Glass 50% Glas



181 Gris clair 577 Gris foncé 580 Noir 919 Navy 519 Rouge 573 Beige 512 Rose clair 501 Blanc

50234

36 pcs T15 Ø15 mm

🇫🇷 ABS 🇮🇹 ABS 🇺🇸 ABS 🇩🇪 ABS



181 Gris clair 577 Gris foncé 580 Noir 919 Navy 519 Rouge 573 Beige 512 Rose clair 501 Blanc

50233

36 pcs T10 Ø10 mm

🇫🇷 ABS 🇮🇹 ABS 🇺🇸 ABS 🇩🇪 ABS



181 Gris clair 577 Gris foncé 580 Noir 919 Navy 519 Rouge 573 Beige 512 Rose clair 501 Blanc

50232

36 pcs T12 Ø12 mm

🇫🇷 ABS 🇮🇹 ABS 🇺🇸 ABS 🇩🇪 ABS



099 Combo violet vert/Argent



833 Combo turquoise/Argent



573 Combo or/Argent



536 Combo vert/Argent



864 Combo violet/Argent



514 Combo pink/Argent



516 Combo fuchsia/Argent



525 Combo rose/Argent

50262

6 pcs

T28 Ø 28mm

 60% Alliage Zinc - 40% Verre
  60% Lega di Zinco - 40% Vetro
  60% Zinc Alloy - 40% Glass
  60% Zinkliegerung - 40% Glas



573 Marron/Argent



558 Bleu/Argent



501 Crystal/Argent



514 Rose/Argent



519 Rouge/Argent



536 Vert clair/Argent



530 Émeraude/Argent




580 Noir/Argent

50260

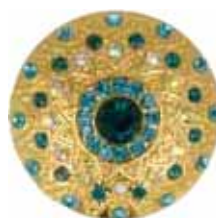
6 pcs

T19 Ø 19mm

 60% Alliage Zinc - 40% Verre
  60% Lega di Zinco - 40% Vetro
  60% Zinc Alloy - 40% Glass
  60% Zinkliegerung - 40% Glas



099 Combo violet vert/Or



833 Combo turquoise/Or



573 Combo or/Or



536 Combo vert/Or



864 Combo violet/Or



514 Combo pink/Or



516 Combo fuchsia/Or



525 Combo rose/Or

50261

6 pcs

T28 Ø 28mm

 60% Alliage Zinc - 40% Verre
  60% Lega di Zinco - 40% Vetro
  60% Zinc Alloy - 40% Glass
  60% Zinkliegerung - 40% Glas



573 Marron/Or



558 Bleu/Or



501 Crystal/Or



514 Rose/Or



519 Rouge/Or



536 Vert clair/Or



530 Émeraude/Or



580 Noir/Or

50259

6 pcs

T19 Ø 19mm

 60% Alliage Zinc - 40% Verre
  60% Lega di Zinco - 40% Vetro
  60% Zinc Alloy - 40% Glass
  60% Zinkliegerung - 40% Glas